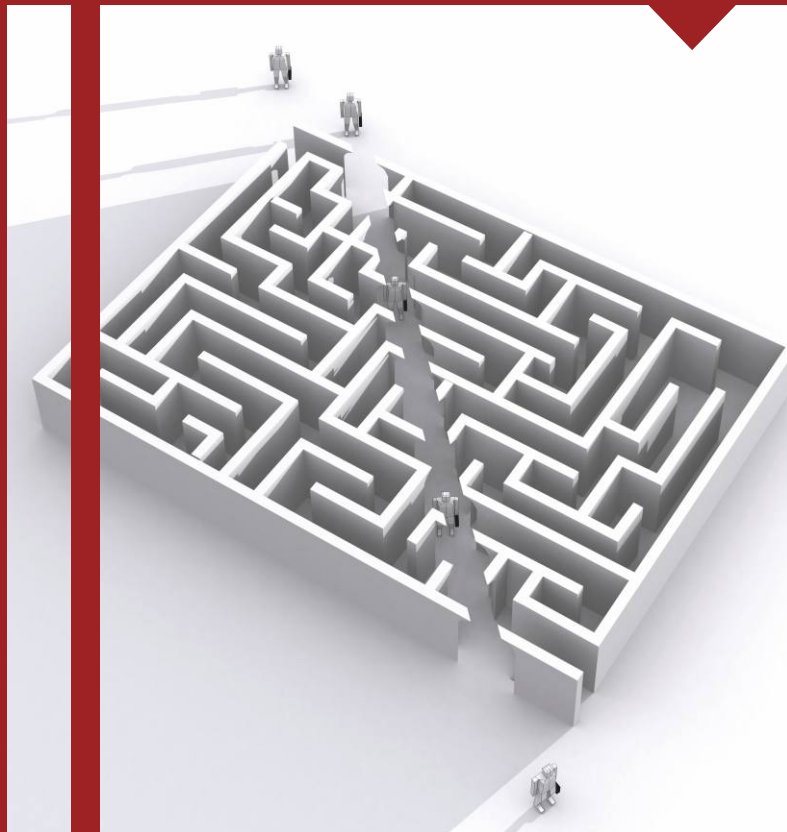


Simplify Engineering Construction



Recommended by Piping construction engineers Implemented with Ease

Imagine a software that makes your work life simple! A software that helps save 75% of your work time. An efficient aide by your side that offers a systemized process, facilitating precision and accuracy in the work process and reducing the chances of costly errors.

From automatic spooling based on logic to the production of drawing and reports, can there be software that takes care of it all?

Presenting **AutoSPOOL™** by **Eureka D-Soft**, a premier engineering software focussed on the Plant Piping construction industry.

An exclusively designed Software that benefits piping construction engineers in every stage of work.

How does AutoSPOOL™ work

AutoSPOOL™ is an automatic piping spooling software used for generating Piping Fabrication Isometrics & user customized reports, based on yard engineering or site requirements. This 'one of its kind' software comes with high capability to manage revision isometrics, develop pipe cutting layout and also aids in designing & planning of scaffolding.

Further, it helps you to check the possibility of convenient erection, besides calculating effective pipe bending length & considering spool transportability requirements. This unique software has been created taking guidelines from internationally recommended best practices.

Why use AutoSPOOL™?

AutoSPOOL™ offers you:

- Automatic and accurate Spool/Erection drawing
- Reduction in erection work by at least 15%
- Automatic spool wise, joint wise, Insulation & tracing report
- Systematised processes
- 75% savings in time
- Reduction of errors in the work process
- Complete control on the job
- Revision management and Project management
- Reliability on every aspect of work

“AutoSPOOL™ is easy to adapt and user friendly. It captures all the details of spool from engineering and brings it out in spool drawing, faster and accurately. This has saved our site engineers time and also helped us in revision and scope management.”

Mr. B.PUHAZHENDHI
General Manager
Hydrocarbon Construction and Pipeline BU
Larsen & Toubro Limited

What do you get from AutoSPOOL™

Automatic generation of Erection Drawing and Spool Drawing with Bill of Materials & Reports
Piping Revision & Project Management
Clear guidelines for erection weld, scaffolding planning and nearest support access*

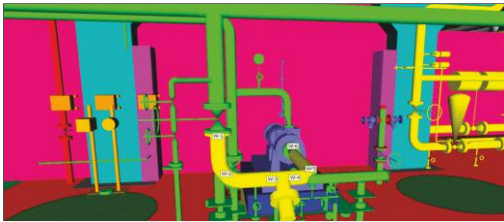
Graphical User Interface



Input: Neutral file like (*.idf, *.pcf, *.ipf) from leading plant design software system or any other neutral file containing piping detailed information can be customizable in ipf (Isometric Piping Format).

AutoSPOOL™ can import neutral files from leading Plant Design Software not limited to PDS, PDMS, SP3D, AutoPLANT, Plant3D etc.

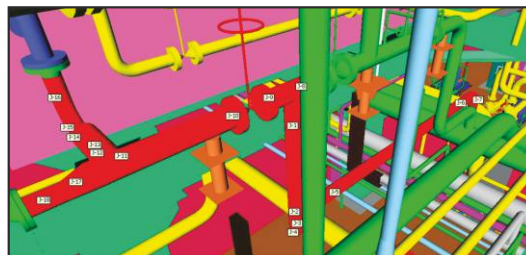
3D model review for planning Fabrication and Erection work*



AutoSPOOL™ enables meticulous planning at your work desk. The software program transfers all the erection welding details and information to the 3D model* for reviewing its construction abilities at the chosen location for erection.

This enables optimization of erection work.

How 3D model helps reduce Erection and Scaffolding work*



Safety of the processes and perfect planning is possible with the 3D model* review

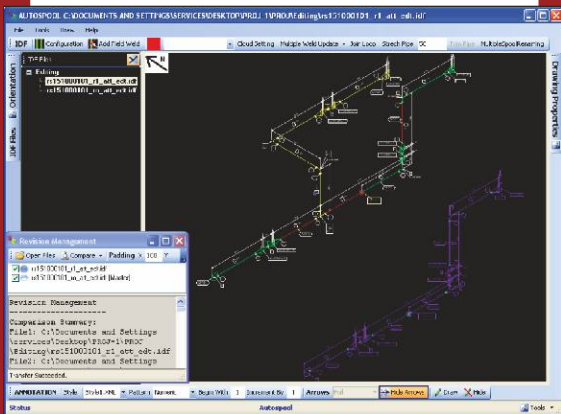
One can reduce erection weld and erection work along with reduced scaffolding requirements

One can access 3D model* for checking the nearest access for erection weld. Planning and Piping personnel can decide erection weld based on various possibilities

Results in elimination of planning of scaffolding scheme in some cases

Built-in Revision Management

AutoSPOOL™ has a built-in feature of revision management where one can automatically transfer weld number, spool number, item number, etc from the older revision to the latest revision. The software program automatically offers interactive/automated clouds for the new, modified and deleted components with corresponding bill of material. Further, the work done in old revision can be restored in new revision.



Erection of Piping, Painting, Insulation and Hardware item measurement consideration

a) Erection of pipe of different sizes:

Length of pipe + fittings + flanges in inch metre

Flanged end valve of different sizes with ratings in numbers

Control valve of different sizes and numbers

b) Painting - same as erection as per design temperature range in running meter & sqm.

c) Insulation of pipe of different sizes as per insulation type and thickness:

Length of pipe + fittings in running metre

Flanges and blind flange assemblies in numbers

All types of valve in numbers

Operating temperature range

d) Hardware items:

Bolts, gaskets etc. and their reports can be completely customized as per your requirement.

Creation of Loop/System (Separate Module Autoloop)

One can create different Loops for pressure testing (hydro/pneumatic) containing different pipe lines having continuous connectivity based on test pressure, service & material spec etc.

One can also create system wise combination of pipe lines with all in line components for pre-commissioning/commissioning.

One can generate loopwise/systemwise drawing and data.

Need to be purchased separately



Piping Construction Project Management

It is a module for creation of projects and presents you a revision name with description and the systematic arrangement of all the input piping files with revisions.

Management of all the input with every revision

Re-naming the file format in customized format

Management of several users

Filter based on individual user

Complete control of all the piping

Reporting and Drawing generation

Colour coding for pipe lines (customized) based on filter as per the user

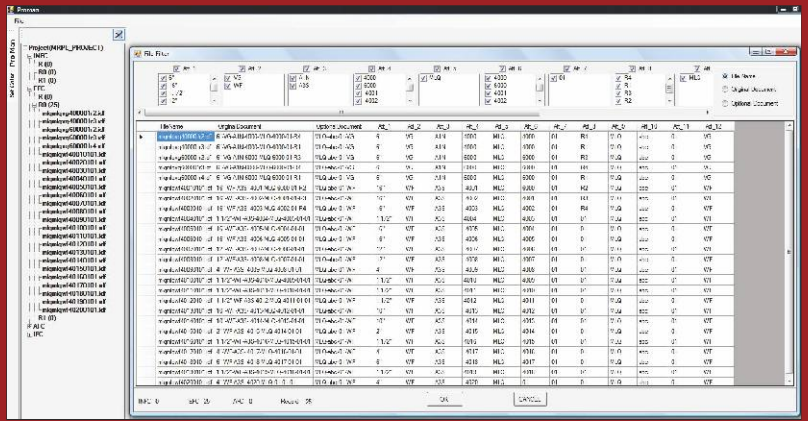
Customizing the file numbering format based on various attributes or by automatic mapping external excel file resulting in customized line numbers formats (Eg.: Line no: 2"-FL-502-4523-A1A-A-02-R1-IH.)

Additional attributes mapping from excel file or from the name of the files based on character or de-illuminator, etc

One can automatically automate the repetitive tasks like automatic insertion of shop weld at 6m length of pipe and fillet at 12 m length of pipe

Automatic spool marking based on length criteria like 10.2mX2.5mX2.5m and Wt of 50 MT etc

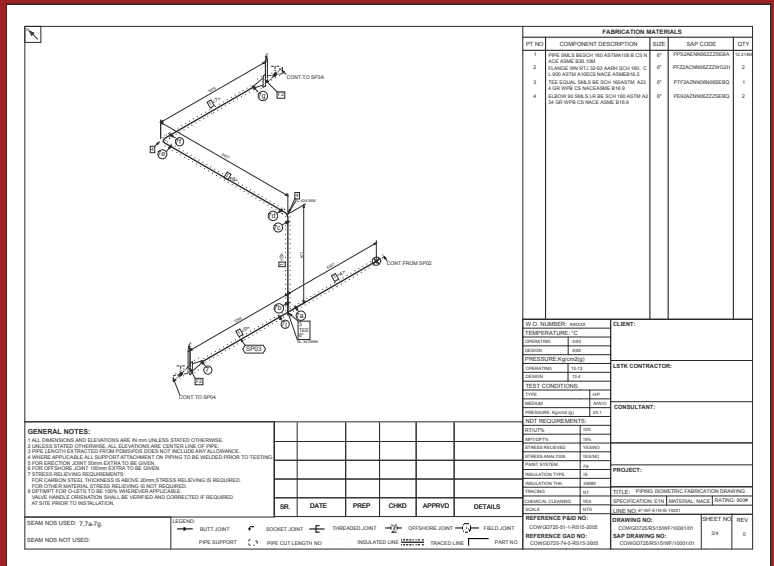
User defined line/drawing numbering formats can be customized as per the requirements



Rule based automation

Spool splitting: Based on flange to flange criteria, manual added field weld, intelligent logic like transportable spool length (e.g. 10.2mX2.5X2.5, 50Mtonn) criteria, standard marketable length availability, converting pipe to bend and vice versa, addition of coupling, allowance for each field/offshore weld, inch dia multiplication factor for various weld criteria, etc.

Spool Drawing



Useful for Drawing Generation

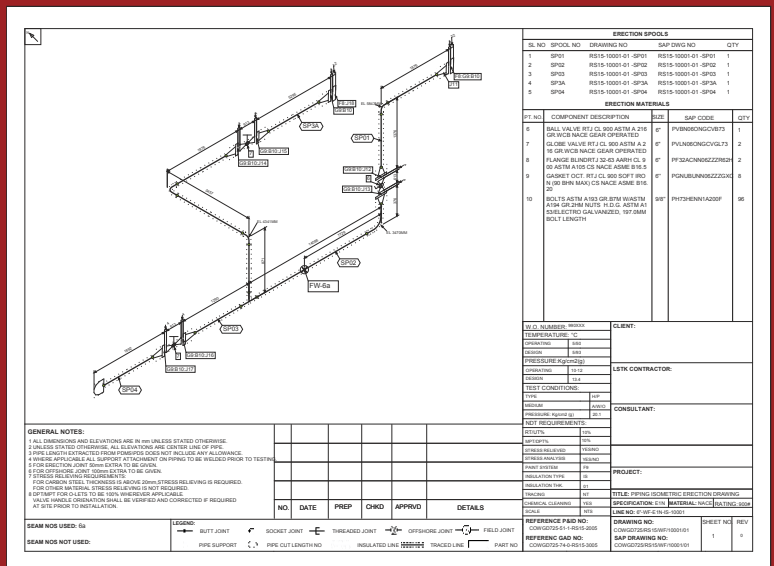
AutoSPOOL™ can be used for generating Erection drawing containing only erection information
It offers Spool Drawing containing fabrication information

One can use AutoSPOOL™ for generating Erection drawing containing all erection/fabrication/offshore information

It also presents Spool/Erection drawing containing all erection/fabrication/offshore information.

AutoSPOOL™ can further be customized for desired Spool numbering, Weld Numbering, Weld Setting, Weld identifier, weld categories, drawings, reporting and much more. Inch Dia calculation considering Reinforcement PAD, Branch and Olets and other factors.

Erection Drawing



Useful for Report Generation

The generated outputs are as follows:

Drawing Upload containing drawing information

Line List Upload containing line information like fluid code, sequence no., etc

Drawing wise bill of material

Spool information drawing wise for fabrication material

Joint information with part 1 & part 2 item code and description for fitup

Support BOQ with tag nos. and quantity

Bill of quantity of all erection material/hardware items etc

Spool wise, piece wise pipe cut length

Total inch dia., weld summary for shop, field, offshore

Inch meter information for pipe, insulation, tracing

Total surface area of line and spools for painting purpose

This can be further customized as per the company/project requirements/standards.



AutoSPOOL™ is open for customization

AutoSPOOL™ can be fully customized as per specific requirements, for complete integration with existing processes

All the output whether graphics, bill of material, attributes or desired revision details, different lists like cut length, Inch dia, Inch Meter, Weld etc., can be fully customized

Backing sheet can be customized as per the requirement by using backing sheets customization module.

Any company specific formats/standards/logic can also be customized.

Joint (weld) summary containing details of each weld and connection components

Drawing_Id	Line_Id	Spl_No	Jt_No	JL_Type	Part1 SAP Code	Part2 SAP Code	Size(Inch)	Fid/Sh	Spec
CM-56176-R01-OS-PR07-01-C2	CM-56176-R01-OS-PR07	SP1	W-1	BW	PPSAERN03ZZSFBA	PE9AZRN03ZZSFBO		3	SA4
CM-56176-R01-OS-PR07-01-C2	CM-56176-R01-OS-PR07	SP1	W-2	BW	PE9AZRN03ZZSFBO	PPSAERN03ZZSFBA		3	SA4
CM-56176-R01-OS-PR07-01-C2	CM-56176-R01-OS-PR07	SP1	W-3	BW	PPSAERN03ZZSFBA	PE9AZRN03ZZSFBO		3	SA4
CM-56176-R01-OS-PR07-01-C2	CM-56176-R01-OS-PR07	SP1	W-4	BW	PE9AZRN03ZZSFBO	PPSAERN03ZZSFBA		3	SA4
CM-56176-R01-OS-PR07-01-C2	CM-56176-R01-OS-PR07	SP1	W-5	BW	PPSAERN03ZZSFBA	PE9AZRN03ZZSFBO		3	SA4
CM-56176-R01-OS-PR07-01-C2	CM-56176-R01-OS-PR07	SP1	W-6	OJET	PPSAERN03ZZSFBA	PSL2ACRN03NGVJST	0.75		SA4
CM-56176-R01-OS-PR07-01-C2	CM-56176-R01-OS-PR07	SP1	W-7	SW	PPSAERN03ZZSEFA	PSL2ACRN03NGVJST	0.75		SA4
CM-56176-R01-OS-PR07-01-C2	CM-56176-R01-OS-PR07	SP1	W-8	SW	PVGDN20LNTD1ZOSH-ST	PPSAERN03ZZSEFA	0.75		SA4
CM-56176-R01-OS-PR07-01-C2	CM-56176-R01-OS-PR07	SP1	W-9	SC	PXC2ACRN0GZZRNIA	PVGDN20LNTD1ZOSH-ST	0.75		SA4
CM-56176-R01-OS-PR07-01-C2	CM-56176-R01-OS-PR07	SP1	W-10	BW	PE9AZRN03ZZSFBO	PPSAERN03ZZSFBA		3	SA4

Inch Dia

DWG NO	LINE NO	NB	Shop	Erection	Offshore
DECO-OS-PR07-L-ISO-81074-R01-01	CI-81074-R01-OS-PR07	0.75	3	0	0
DECO-OS-PR07-L-ISO-81074-R02-01	CI-81074-R02-OS-PR07	0.75	0.75	0	0
DECO-OS-PR07-L-ISO-56176-R01-01	CM-56176-R01-OS-PR07	0.75	3.75	0	0
DECO-OS-PR07-L-ISO-56176-R01-01	CM-56176-R01-OS-PR07	3	42	0	0
DECO-OS-PR07-L-ISO-56176-R02-01	CM-56176-R02-OS-PR07	0.75	1.5	0	0
DECO-OS-PR07-L-ISO-56176-R02-01	CM-56176-R02-OS-PR07	3	21	0	0

Inch Meter

DWG NO	LINE NO	SPOOL	NB	Length (M)	Total (M)
DECO-OS-PR07-L-ISO-81074-R01-01	CI-81074-R01-OS-PR07	SP1	0.75	55.112	41.334
DECO-OS-PR07-L-ISO-81074-R02-01	CI-81074-R02-OS-PR07	SP1	0.75	45.021	33.766
DECO-OS-PR07-L-ISO-56176-R01-01	CM-56176-R01-OS-PR07	E-	3	0.015	0.045
DECO-OS-PR07-L-ISO-56176-R01-01	CM-56176-R01-OS-PR07	SP1	0.75	0.28	0.21
DECO-OS-PR07-L-ISO-56176-R01-01	CM-56176-R01-OS-PR07	SP1	2	0.076	0.152
DECO-OS-PR07-L-ISO-56176-R01-01	CM-56176-R01-OS-PR07	SP1	3	37.403	112.209

Additional features of AutoSPOOL™

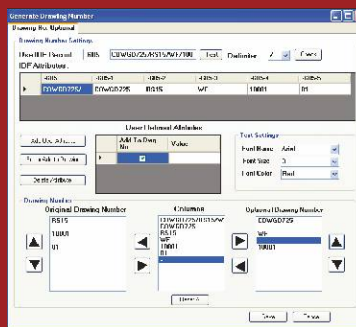
Flexible Tables

One can create flexible customized tables for the status of revision with columns like Sr. No., Description, Approved By, Revised By etc.

0	05.08.2010	XYZ	XYZ	XYZ	ISSUED FOR CONSTRUCTION
NO.	DATE	PREP	CHKD	APPRVD	DETAILS
REVISION DETAILS					

Drawing/line numbering format

One can customize line or drawing numbering format. This can be a combination of the line numbering format or of additional attributes.



E.g. Line no. is Fluid code-Unit no.-Line no.-Train no.-Sheet no.-Insulation.

(PZ-511-720101-01-IN/HT/INHT) Project Attribute is: Project name: MHN, Specs A5A. So the unique drawing/line numbering format could be Project name-Unit No.-Specs-Line No. followed by SP1 or ER1 (MHN-511-7201-S1).

Reinforcement PAD/ Branch

AutoSPOOL™ comes with a provision to add two welds (BR and RPAD) as per the customized requirement

Flexibility

Complete flexibility for weld numbering, weld type, spool and annotation formats etc.

Weld Identifiers						
	Prefix	Delimiter	Enclosure	Font	Size	Color
FIELD	FW	-	Rectangle	RomanD	11	89
SHOP			Round	RomanD	11	94
OFFSHORE	OS	-	Ellipse	RomanD	11	88
FIELD FITTED	FFW	-	None	RomanD	7	89

Scaffolding Consideration - AutoSCAFF™

One can pass welding information with co-ordinates from AutoSPOOL™ to text file. This information can be used for designing various scaffolding schemes based on the weight or number of persons operating.

AutoSCAFF is a separate module for complete scaffolding design of various patterns or schemes based on loading requirement.

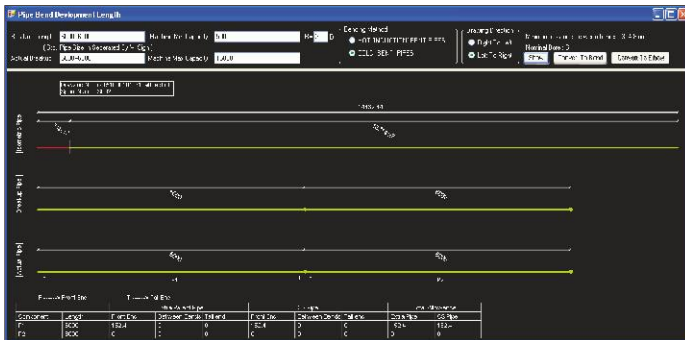
AutoSPOOL™ further takes the input from AutoSCAFF and shows the scaffolding scheme in 3D model* along with Piping, Structural, Cables, etc. in order to check the practical accessibility and safety.

Item Code Replacement

The program has provision of replacing the item code based on standard item description logics.

PIPE1 ➡ PPS2AENN06ZZZSEBA

Bend Development Schedule



This is a program for calculation of elbow to bend effective length. It takes care of minimum length required at tail end, front end and in-between bends. It helps to develop the Piping Isometric into straight pipe length and in combination of optimum length as per the bending machine capacity. It also checks whether the welds are coming on the bends or 1D from the bends.

AutoSPOOL™ Works for You

AutoSPOOL™ is an engineer's delight. A masterpiece software that takes care of your every need and offers you solutions at every platform. So, if you wish to simplify your work process, ask for a demo of AutoSPOOL™ today.

Marketed by:



E: info@parascadd.com | W: parascadd.com

Training & customer support

Training and customer support plays a crucial role in successfully implementing the AutoSPOOL™ software. We provide on site/off site training & implementation services through our experts who will work with your team to ensure seamless integration in your work process. Kindly contact your country's support person to discuss more about the support & training.

Minimum recommended hardware & software configuration

A latest P IV with min. 2 Ghz., 2GB RAM and 512 MB graphic card.
Windows XP Professional /Vista /Win 7 operating system.

For 3D review of erection work, Autodesk Navisworks Simulate/Manage 2011.

Further, NVIDIA graphical card helps for 3D model* acceleration.

This configuration may change depending on the evolution of operating systems and related software.



© 2010 by Eureka D-Soft Private Limited 2010. All rights reserved.
AutoSPOOL™, SpoolMan™, ProMAN™, MatALL™, AutoISO™ are registered trademarks of Eureka D-Soft Pvt. Ltd.

All other brand names, product names or trademarks belong to their respective holders.

*3D model should be available in *.NWD file.